

Vista Skyview

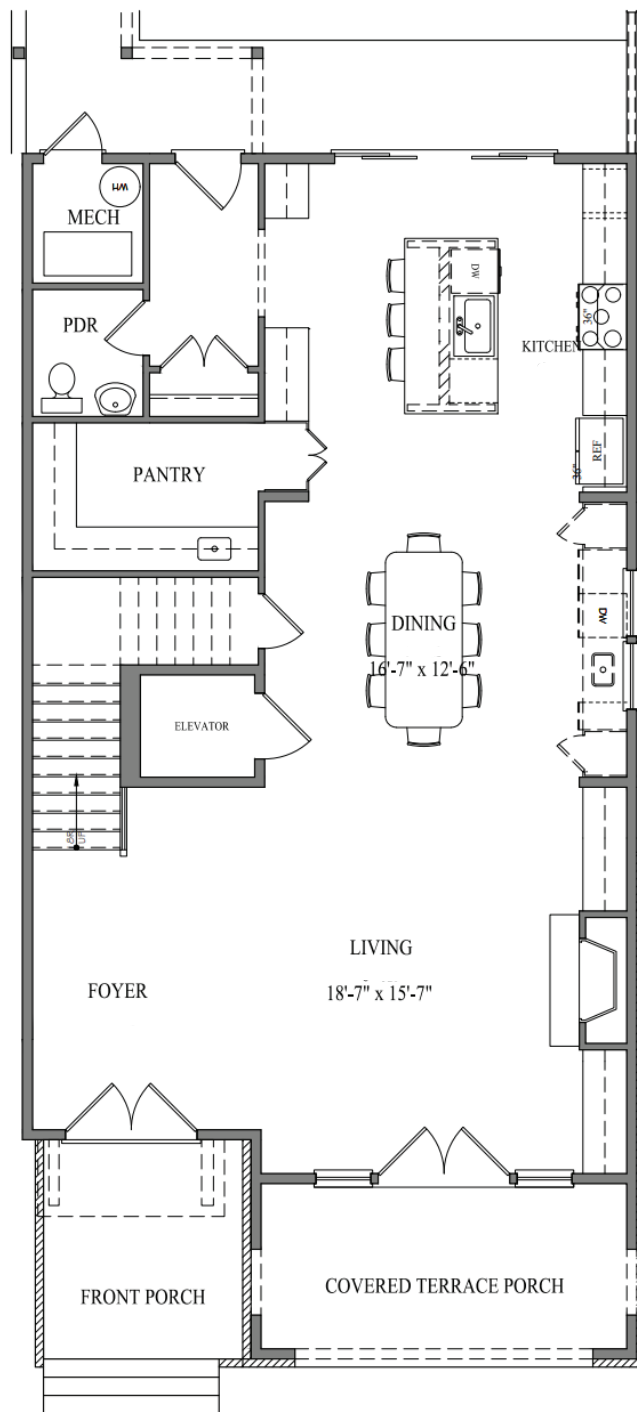
4 or 5 BR | 4.5 BA | 4124 SQ FT

LOT M58



airabella
LAKE OCONEE

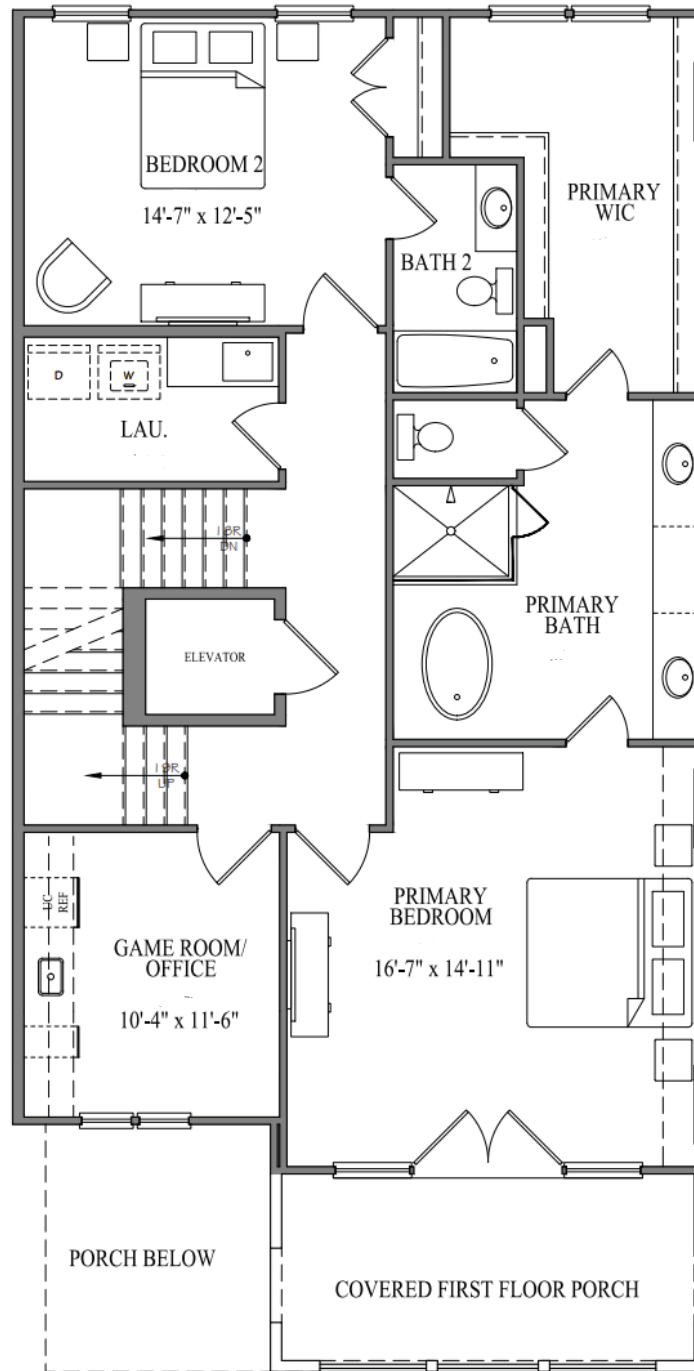
First Floor



Serene Living

Savor the charm of the outdoors with an oversized front porch, a perfect spot for unwinding and enjoying the energy of the Airabella community. Adding to the charming ambiance, each residence is adorned with its own gas lantern, evoking a warm and inviting atmosphere that welcomes you home.

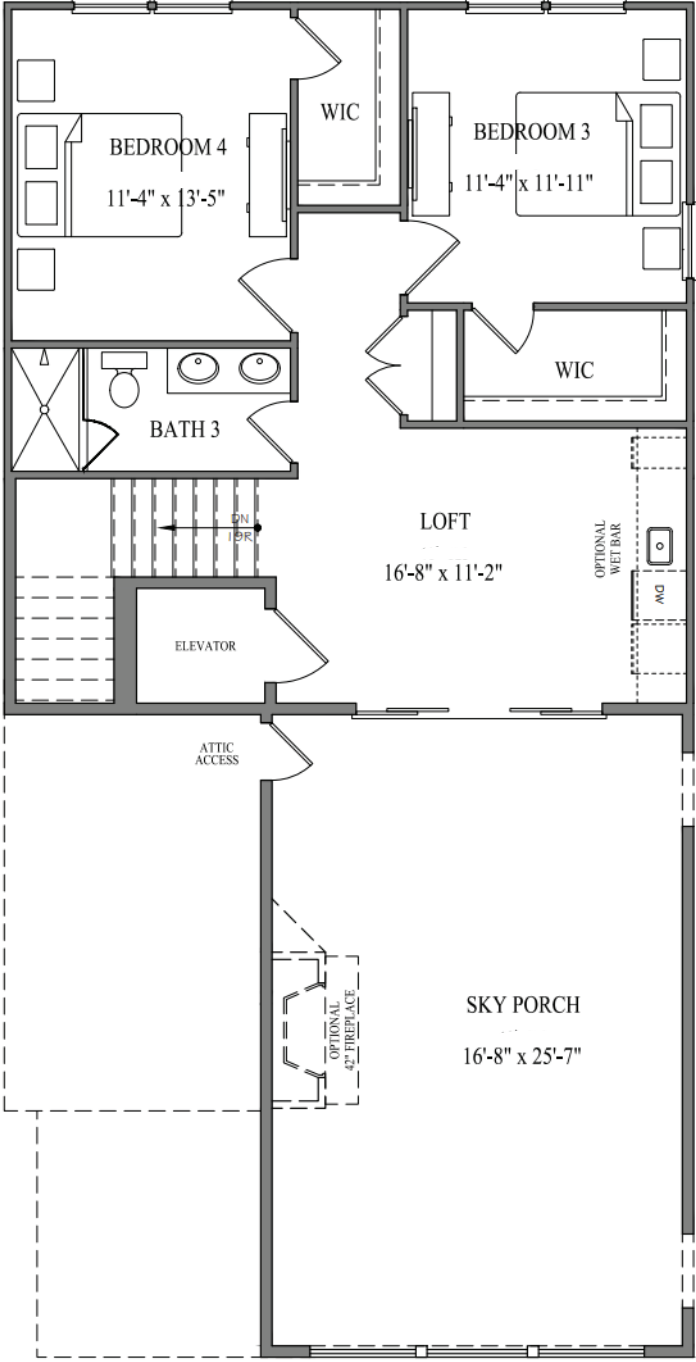
Second Floor



Bright Living

Step into spacious, light-filled interiors adorned with premium finishes and state-of-the-art amenities. Embrace the convenience of a modern gourmet kitchen, complete with a butler's pantry for added storage and preparation space. With ample entertaining areas and a private elevator for seamless access, every detail has been thoughtfully curated to enhance your living experience.

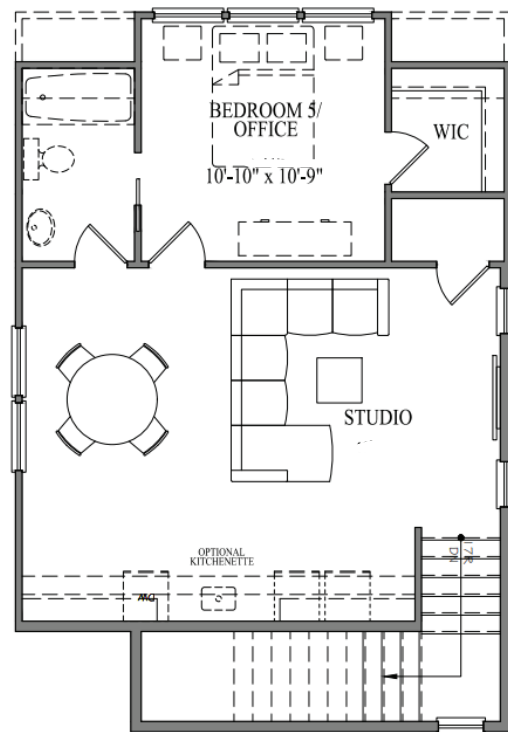
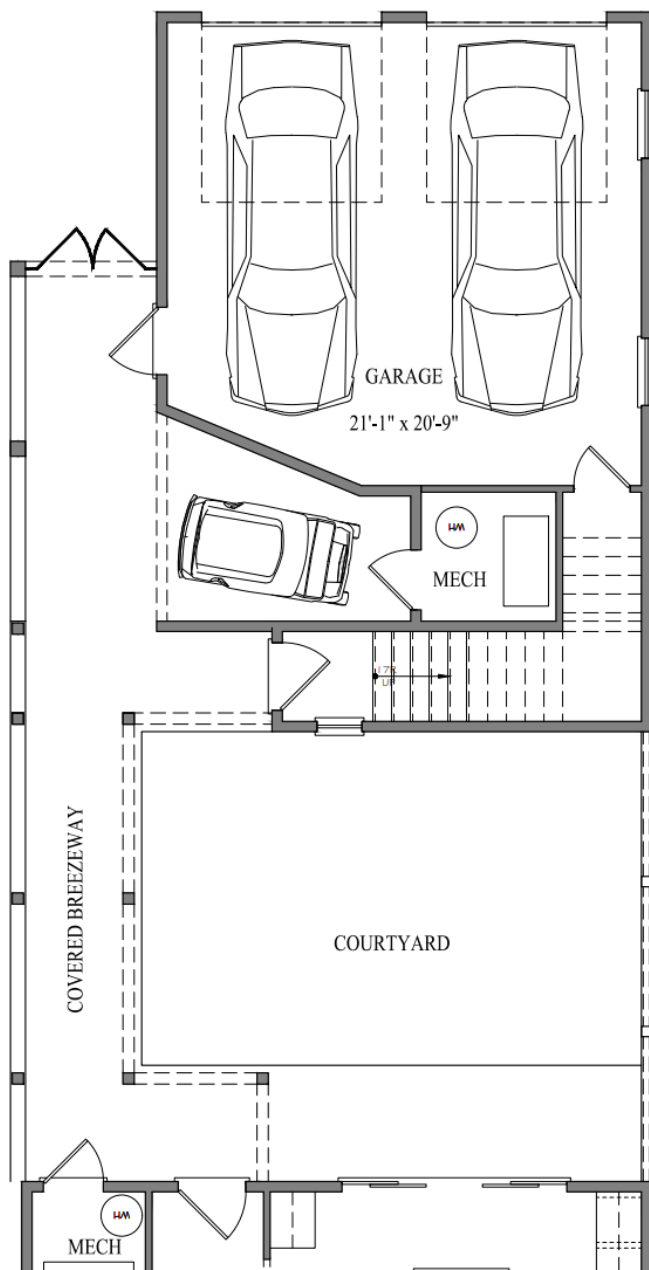
Third Floor



Luxurious Living

Experience stunning views of the lush greens of the nearby golf course from your private third-story sky veranda. Conveniently access a curated selection of retail options, all within a short walk or golf cart ride away.

Detached Garage & Studio



STUDIO ABOVE GARAGE



Spacious Living

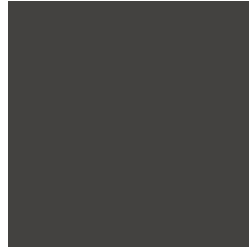
Enhance your home with our Optional In-Law Suite or Office. This beautifully finished space, located above the detached garage, can function as a fully equipped living area for a family member or as a private, dedicated office.

Design Elements



BRICK

Painted SW 7647
Crushed Ice



BOARD + BATTEN

SW 7069 Iron Ore



ROOF

Colonial Slate



SIDING

SW 7068 Grizzle Gray

WINDOWS

Andersen 100, Black

DOORS

Stained Wood

Opaque Solid SW 6258 Tricorn Black



HARDWARE

Schlage Century Sectional
Matte Black Fc58cen622



GAS LANTERN

The Coppersmith Contempo Gas
Lantern Standard Wall Mount

Each residence showcases contemporary architecture and top-of-the-line fixtures. With an emphasis on creating spaces that blend seamlessly with the surrounding environment, the homes at Airabella Lake Oconee provide a serene living experience with direct access to its many amenities.